

REVISIONS		
REV	DESCRIPTION	DATE APPROVED

PRIMARY SIDE	LAYER 1	1/2 OZ
INTERNAL SIGNAL 1	LAYER 2	1/2 OZ
GROUND PLANE	LAYER 3	1 OZ
POWER PLANE	LAYER 4	1 OZ
INTERNAL SIGNAL 2	LAYER 5	1/2 OZ
SECONDARY SIDE	LAYER 6	1/2 OZ

DRILL CHART			
ALL UNITS ARE IN INCHES			
FIGURE	SIZE	PLATED	QTY
V	0.012	PLATED	51
+	0.013	PLATED	6
+	0.0135	PLATED	601
T	0.03	PLATED	4
L	0.032	PLATED	18
X	0.035	PLATED	22
□	0.041	PLATED	862
○	0.055	PLATED	7
◇	0.059	PLATED	36
◇	0.12	NON-PLATED	48
◇	0.125	NON-PLATED	3
◇	0.25	NON-PLATED	1

LAYER DETAIL
CONSTRUCTION LAMINATE THICKNESS
AT VENDORS' DISCRETION

1.000/- .012
0.000/- .013
1.000/- .0139

NOTES:

- PRIMARY / COMPONENT SIDE SHOWN.
- LAYER ORIENTATION: SEE LAYER DETAIL.
- LAYER ORIENTATION: FUNCTIONAL FR-4 LAMINATES AND PREPREGS PER MIL-P-13040. MINIMUM GLASS TRANSITION TEMPERATURE (T_g) OF 170 DEGREE CENTIGRADE REQUIRED. PREPREG & CORE DIELECTRICS MUST BE A MINIMUM 2 PLY.
- THICKNESS: 0.003" +/- 0.005" (FINISHED)
- PLATING: - 1/2 OZ. PLATED TO 1.5 OZ. ON OUTER LAYERS
- 1/2 OZ. ON INNER SIGNAL LAYERS.

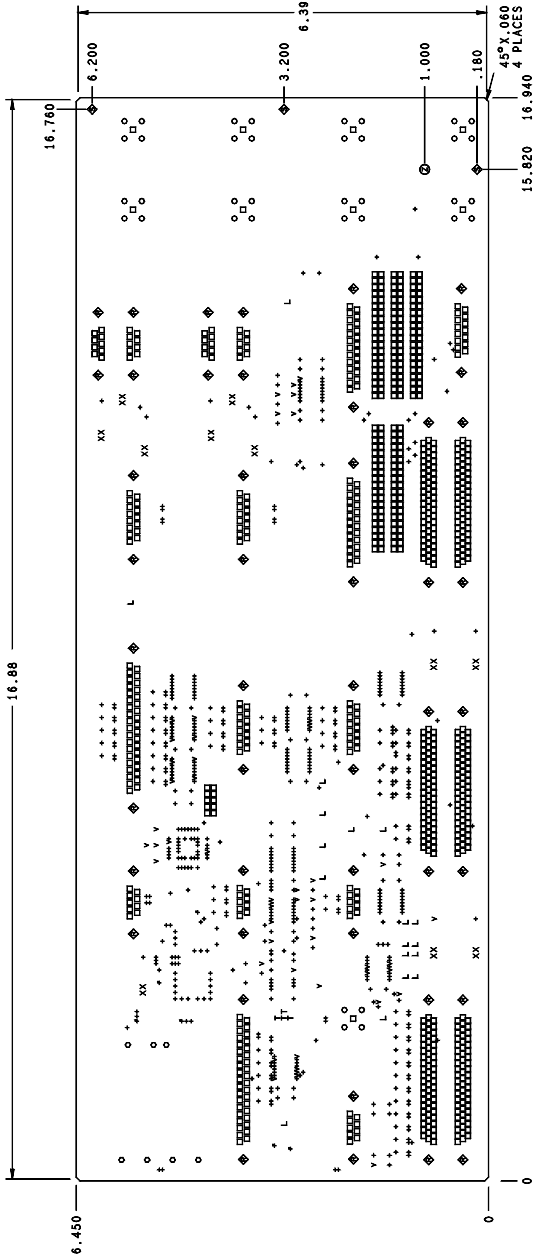
- 0Z. ON PLANE LAYERS (NO PLATE)
- MINIMUM AVERAGE COPPER THICKNESS OF .001" WITH AN ABSOLUTE MINIMUM THICKNESS OF .0008" AS MEASURED IN MIL-P-55110.
- FINER CONNECTIONS TO BE ELECTROLYTIC HARD GOLD (50-100 MICROINCH) OVER LOW STRESS ELECTROLYTIC HARD GOLD (200 MICROINCH) PER IPC-D-275, TABLE 3-B CLASS 2.

- FINISH: -.002" MINIMUM FOR EXTERNAL ANNUAL RING, .001" MINIMUM FOR INTERNAL ANNUAL RING.
- ANNUAL RING: TANGENCY IS ACCEPTABLE ON .010" DIA. HOLES.
- SOLDER MASK: LIQUID PHOTO IMAGEABLE;
SOLDER MASK OVER BARE COPPER BOTH SIDES,
SOLDER MASK OVER ALL OTHER SURFACES ON BOTH SIDES
RESPECTIVE CIRCUIT LAYERS.
TENT TOP SIDE VIAS, ENCRATCH SOLDERMASK ONTO BOTTOMSIDE VIAS EXCEPT TESTVIAS.

- BOW AND TWIST: MAXIMUM OF .010 INCH / INCH FOR THROUGH HOLE BOARDS.
MAXIMUM OF .005 INCH / INCH FOR SURFACE MOUNT BOARDS.
- SILKSCREEN: WHITE NON-CONDUCTIVE INK NO INK TO APPEAR ON COMPONENT PADS. LINES TO BE .006" MINIMUM.
- PCB: NOMINAL CONDUCTOR WIDTHS ON FINISHED BOARD TO BE WITHIN +/-15%, OR +/-1 MIL, WHICHEVER IS LESS OF ARTWORK AS DEFINED ON GERBERS AND SUPPLIED APERTURE WIDTH.
- ELECTRICAL TEST: FINISHED PCB TO BE SUBJECT TO 100% CONTINUITY AND ISOLATION ELECTRICAL TEST. TEST FIXTURES TO BE GENERATED PER IPC-D-385 QUANTY TEST DATA. CROSS-REFERENCED TO GERBER EXTRACTED NET LIST DATA.
VENDOR TO TEST PERFORMANCE ON A COMPONENT.

- HOLE CHART: UNLESS OTHERWISE SPECIFIED, ALL TOLERANCES ARE +/- .003"
- SPACING: MINIMUM FINISHED CONDUCTOR SPACING TO BE 5 MILS
- SPECIFICATION: UNLESS OTHERWISE SPECIFIED, FAB OF THIS PCB SHALL BE IN CONFORMANCE WITH THE FOLLOWING.
IPC-6012 CLASS 2 (R87815)

- FLAME CLASS: UL 94V-0 REQUIRED. ALL REQUIREMENTS OF UL 94V-0
- MARK: MANUFACTURER MUST BE UL RECOGNIZED TO PRODUCE THIS PRODUCT SUCH THAT IT MEET 130 449 C MAXIMUM OPERATING TEMPERATURE THE FOLLOWING MUST BE MARKED OR ETCHED ON SIDE OF 2 OF PCB IN AREA FREE OF COMPONENT COVERING;
DATECODE (YYMM), UL RECOGNIZED VENDOR ID, UL TYPE DESIGNATION,
AND/OR MARKING WHICH REFLECT THE SPECIFIED FLAME CLASS AND MAXIMUM OPERATING TEMPERATURE RATINGS.



SIGNET INCORPORATED			
UNLESS OTHERWISE NOTED, ALL DIMENSIONS ARE IN INCHES			
DATE	REV	DESCRIPTION	DATE
11/14/00	1	11/14/00	11/14/00
11/14/00	2	11/14/00	11/14/00
11/14/00	3	11/14/00	11/14/00
11/14/00	4	11/14/00	11/14/00
11/14/00	5	11/14/00	11/14/00
11/14/00	6	11/14/00	11/14/00
11/14/00	7	11/14/00	11/14/00
11/14/00	8	11/14/00	11/14/00
11/14/00	9	11/14/00	11/14/00
11/14/00	10	11/14/00	11/14/00
11/14/00	11	11/14/00	11/14/00
11/14/00	12	11/14/00	11/14/00
11/14/00	13	11/14/00	11/14/00
11/14/00	14	11/14/00	11/14/00
11/14/00	15	11/14/00	11/14/00
11/14/00	16	11/14/00	11/14/00
11/14/00	17	11/14/00	11/14/00
11/14/00	18	11/14/00	11/14/00
11/14/00	19	11/14/00	11/14/00
11/14/00	20	11/14/00	11/14/00
11/14/00	21	11/14/00	11/14/00
11/14/00	22	11/14/00	11/14/00
11/14/00	23	11/14/00	11/14/00
11/14/00	24	11/14/00	11/14/00
11/14/00	25	11/14/00	11/14/00
11/14/00	26	11/14/00	11/14/00
11/14/00	27	11/14/00	11/14/00
11/14/00	28	11/14/00	11/14/00
11/14/00	29	11/14/00	11/14/00
11/14/00	30	11/14/00	11/14/00
11/14/00	31	11/14/00	11/14/00
11/14/00	32	11/14/00	11/14/00
11/14/00	33	11/14/00	11/14/00
11/14/00	34	11/14/00	11/14/00
11/14/00	35	11/14/00	11/14/00
11/14/00	36	11/14/00	11/14/00
11/14/00	37	11/14/00	11/14/00
11/14/00	38	11/14/00	11/14/00
11/14/00	39	11/14/00	11/14/00
11/14/00	40	11/14/00	11/14/00
11/14/00	41	11/14/00	11/14/00
11/14/00	42	11/14/00	11/14/00
11/14/00	43	11/14/00	11/14/00
11/14/00	44	11/14/00	11/14/00
11/14/00	45	11/14/00	11/14/00
11/14/00	46	11/14/00	11/14/00
11/14/00	47	11/14/00	11/14/00
11/14/00	48	11/14/00	11/14/00
11/14/00	49	11/14/00	11/14/00
11/14/00	50	11/14/00	11/14/00
11/14/00	51	11/14/00	11/14/00
11/14/00	52	11/14/00	11/14/00
11/14/00	53	11/14/00	11/14/00
11/14/00	54	11/14/00	11/14/00
11/14/00	55	11/14/00	11/14/00
11/14/00	56	11/14/00	11/14/00
11/14/00	57	11/14/00	11/14/00
11/14/00	58	11/14/00	11/14/00
11/14/00	59	11/14/00	11/14/00
11/14/00	60	11/14/00	11/14/00
11/14/00	61	11/14/00	11/14/00
11/14/00	62	11/14/00	11/14/00
11/14/00	63	11/14/00	11/14/00
11/14/00	64	11/14/00	11/14/00
11/14/00	65	11/14/00	11/14/00
11/14/00	66	11/14/00	11/14/00
11/14/00	67	11/14/00	11/14/00
11/14/00	68	11/14/00	11/14/00
11/14/00	69	11/14/00	11/14/00
11/14/00	70	11/14/00	11/14/00
11/14/00	71	11/14/00	11/14/00
11/14/00	72	11/14/00	11/14/00
11/14/00	73	11/14/00	11/14/00
11/14/00	74	11/14/00	11/14/00
11/14/00	75	11/14/00	11/14/00
11/14/00	76	11/14/00	11/14/00
11/14/00	77	11/14/00	11/14/00
11/14/00	78	11/14/00	11/14/00
11/14/00	79	11/14/00	11/14/00
11/14/00	80	11/14/00	11/14/00
11/14/00	81	11/14/00	11/14/00
11/14/00	82	11/14/00	11/14/00
11/14/00	83	11/14/00	11/14/00
11/14/00	84	11/14/00	11/14/00
11/14/00	85	11/14/00	11/14/00
11/14/00	86	11/14/00	11/14/00
11/14/00	87	11/14/00	11/14/00
11/14/00	88	11/14/00	11/14/00
11/14/00	89	11/14/00	11/14/00
11/14/00	90	11/14/00	11/14/00
11/14/00	91	11/14/00	11/14/00
11/14/00	92	11/14/00	11/14/00
11/14/00	93	11/14/00	11/14/00
11/14/00	94	11/14/00	11/14/00
11/14/00	95	11/14/00	11/14/00
11/14/00	96	11/14/00	11/14/00
11/14/00	97	11/14/00	11/14/00
11/14/00	98	11/14/00	11/14/00
11/14/00	99	11/14/00	11/14/00
11/14/00	100	11/14/00	11/14/00

The information herein is the property of SIGNET. Transmittal, receipt or possession of the information does not imply, in any way, any right to use, reproduction or publication of it, in whole or part, shall be made without written authorization from SIGNET.

FABRICATION DRAWING	
ORDAPANEL	
REV	
ORDAPANEL	
SCALE 1:1 (SHEET 1 OF 1 PLACES & RELATED LEVEL)	