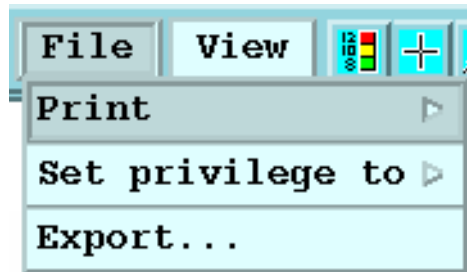
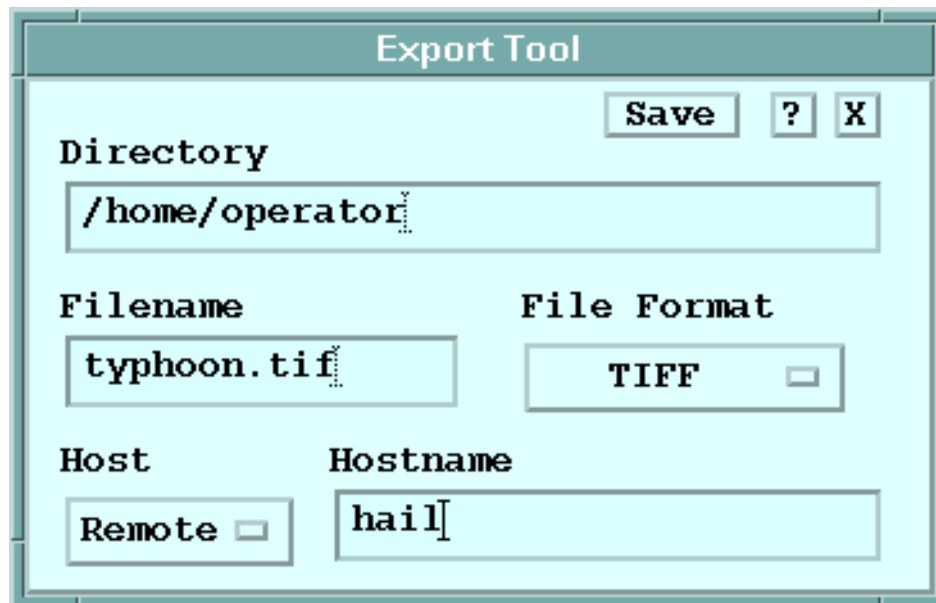


5.16 Printing and Exporting Displays



The File button in the upper left of the menu has options for printing displays and for exporting displays in a variety of formats. The postscript setup menu is described in Chapter 2 of the *IRIS Radar Manual*.

The export tool shown below lets you output to a disk file on your local computer or to a remote computer in a variety of formats.



The supported formats are: GIF (perhaps the most useful), TIF, BMP and Post Script.



Automatic printing and exporting is controlled by the Product Output Menu (section 6.3). The formats are controlled by the setup→output utility (see the *IRIS Utilities Manual*).

5.17 Window Keyboard Commands

There are several convenient keyboard commands that are available. These are summarized here.



Your cursor must be in the image area of the Quick Look Window for the keyboard commands to function.

Keystroke	Action
←→ LEFT/RIGHT Arrow	Forward/Back in single-step time sequence
SPACE BAR	Toggle loop on/off
↑↓ UP/DOWN Arrows	Up/Down height step for CAPPI or NDOP