



5.8 Display Options Tool

The **Display Options** tool allows you to select various components of a display such as geographic overlays, range rings, drop shadows and even the overlay of multiple products, warning centroids and echo tracks. Click on the icon to display the tool.

Display Options: WINDOW2

File Commands Help

Product Type ☐

Product Overlays

<input type="checkbox"/>	SLINE	<input type="text" value="DEFAULT"/>
<input type="checkbox"/>	WIND	<input type="text" value="DEFAULT"/>
<input type="checkbox"/>	None	<input type="text"/>

Units

Rings

Center

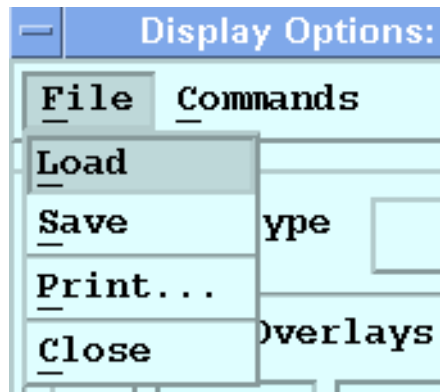
Legend ☒ Shadow

OK Cancel

Apply All Apply PPI

Saving Quick Look Window Display Options

Because there are many display options in this menu that have an important effect on the appearance of a Window, IRIS provides an easy way for you to save and recall configurations that you have made. Clicking on File provides the following choices:

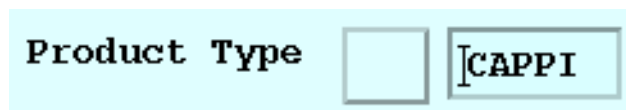


Save will cause the menu current settings **FOR THIS WINDOW ONLY** to be saved. It is important to understand that when you save a configuration you are not effecting any other window, any other user or the operation of IRIS. This means that, with the permission of your system manager, you can make your own personal settings for a window without effecting anyone else.

Load will cause the current saved settings to be restored. This is convenient if you only want to make a temporary change.

Print will make a hardcopy of the menu to the default system printer.

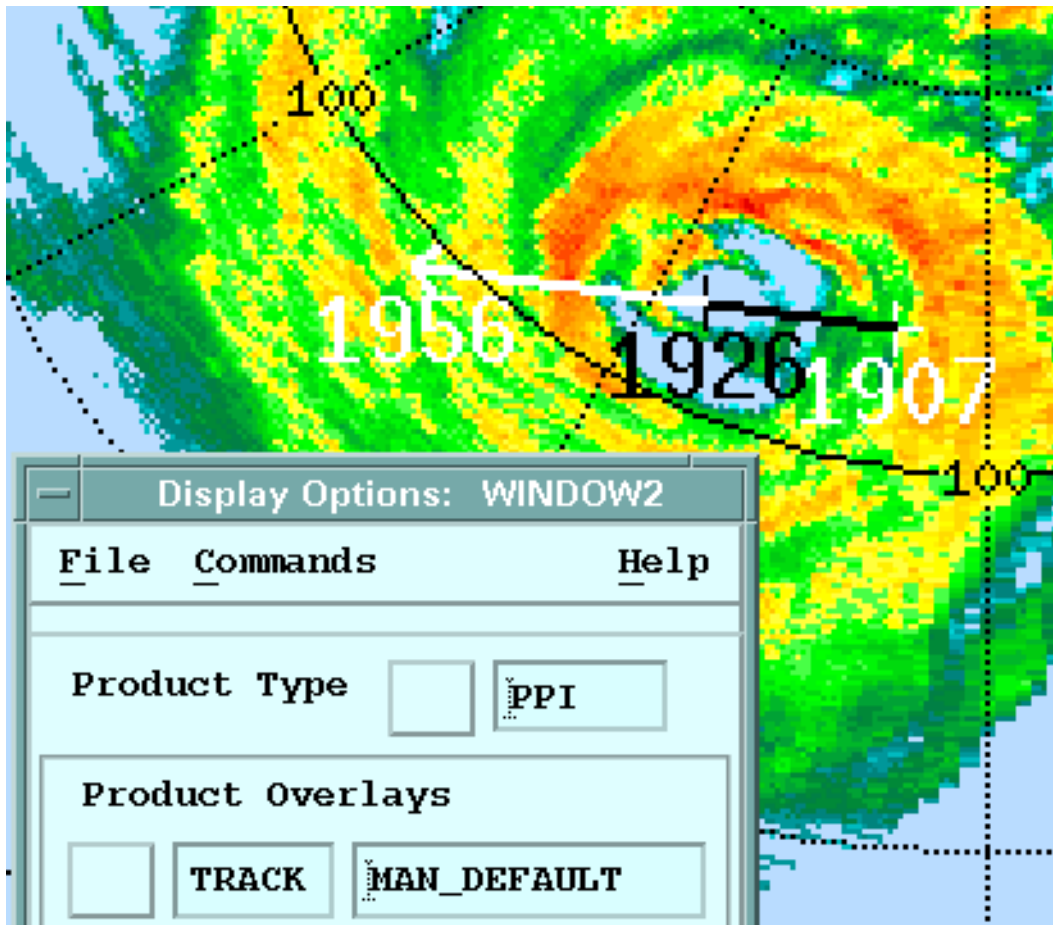
Selecting the Product Type



When you first enter the **Display Options** tool the product type will be inserted automatically into this field. Any changes that you make can be applied to this product type or for all product types according to the **Apply** buttons at the bottom of the menu. You can select a different product type by clicking the button.



Important: If you are displaying a CAPPI and change the product type field shown above to say PPI, then any changes that are applied will not be reflected in the product that is being displayed (the CAPPI) unless you click “Apply All” at the bottom of the Display Options Menu.



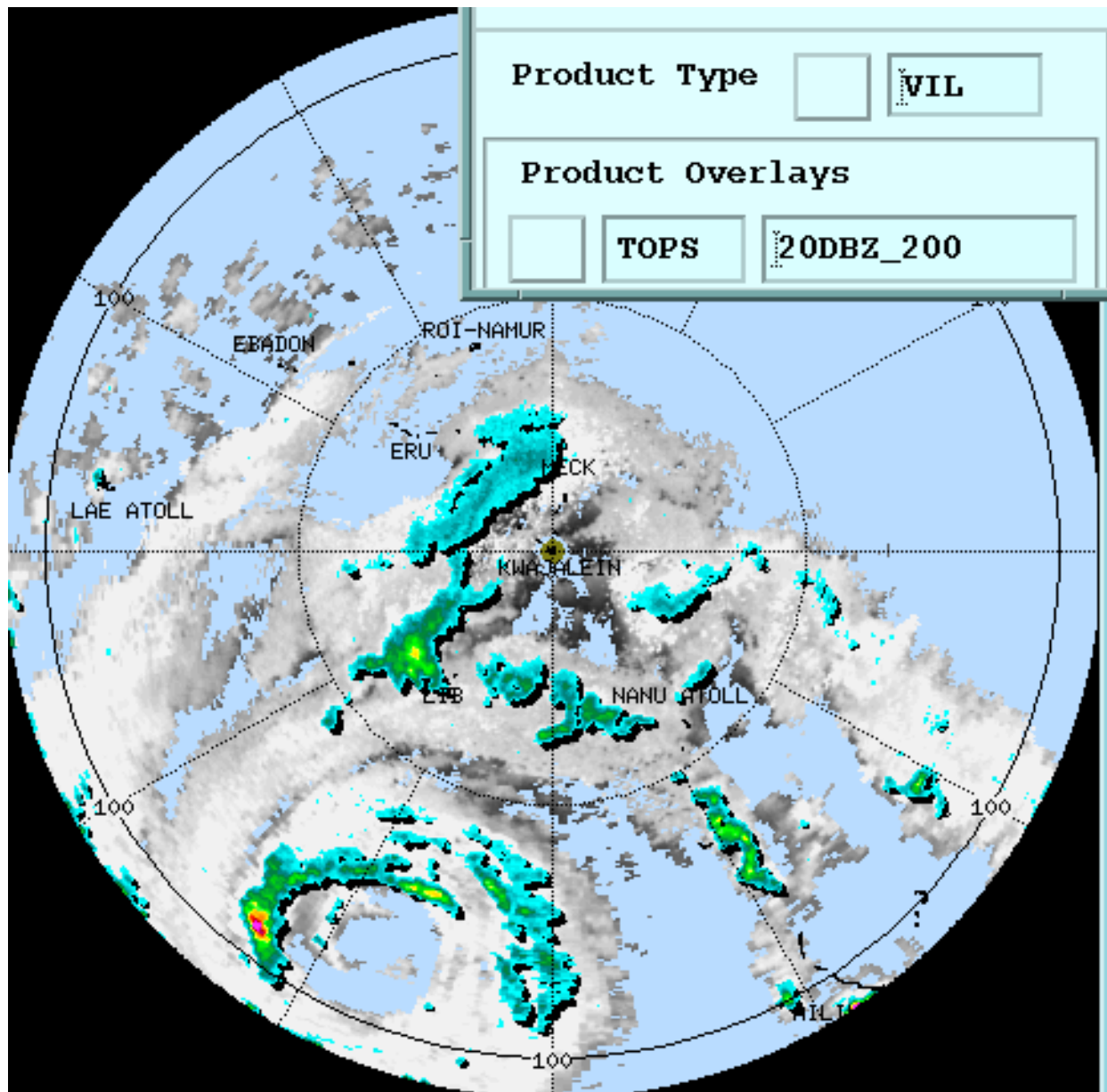
Adding Product Overlays

The Product Overlay section of the Display Option Tool lets you combine different products together. Almost any kind of product can be overlaid on any other product.

In the example above, an interactive TRACK product has been overlaid on a PPI. Typical applications for this are:

- WARN product overlays
- WIND or NDOP (multiple Doppler) wind barb overlays
- TRACK
- SLINE (shear line).

Multiple products can be overlaid in this manner. For example, WIND and SLINE displayed together would show the wind vectors associated with a shear line.



It is also possible to combine two different types of image products. The example above shows VIL product with TOPS displayed underneath.



Important: When combining two image products, it is important to select contrasting color scales to be able to separate the data. In this example a gray scale was used for the TOPS. The drop shadows on the VIL are helpful.



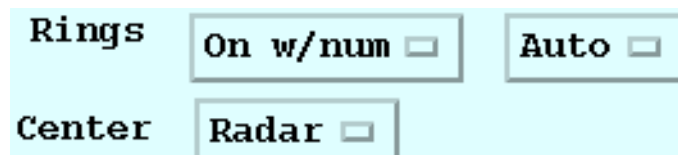
If your IRIS system supports satellite IMAGE product ingest, then this is how you combine the satellite display with radar data.

Range Units

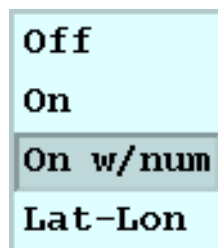


This allows you to select range units for output displays. Choices are: either scientific (kilometers) or navigational (nautical miles for horizontal distances and kilofeet for altitudes).

Range Rings



You can add range rings, adjust the spacing of the range rings and center the rings on predefined points (e.g. the radar or perhaps an airport. When you click on the Rings button, IRIS displays the following menu:



None — No range rings are displayed.

On — Range rings are displayed but not numbered

On W/Num — Range rings are displayed with range numbers.

Lat/Lon — A latitude/longitude grid is displayed. In addition, the display legend for each product shows the maximum product range.

Ring spacing is selected by the button to the right (Auto in the example). This gives a pull-down list of range ring spacings. The spacings will be displayed as either km or nautical miles, depending on the units selection

The **Center** button allows you to select the center of the range rings from a list of pre-defined home points. The home points are defined in the Cursor or Track Tool.



Note: You must have operator privilege to define home points in the Cursor or Track tools. Operator privilege for a Quick Look Window is set in the File tool by entering a password that is set in the setup/display utility.


Legend



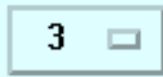
Legend

This button causes a legend to be put into the actual image. Most customers prefer to leave this off since the Quick Look Window has a built-in legend.

If you elect to put a legend in the display, we recommend the following to optimize the Window size.:

- Use **View** to select a standard rectangular size (e.g., 880 x 720).
- Use the Legend icon  to toggle the Quick Look Window legend off.

Shadow



Shadow

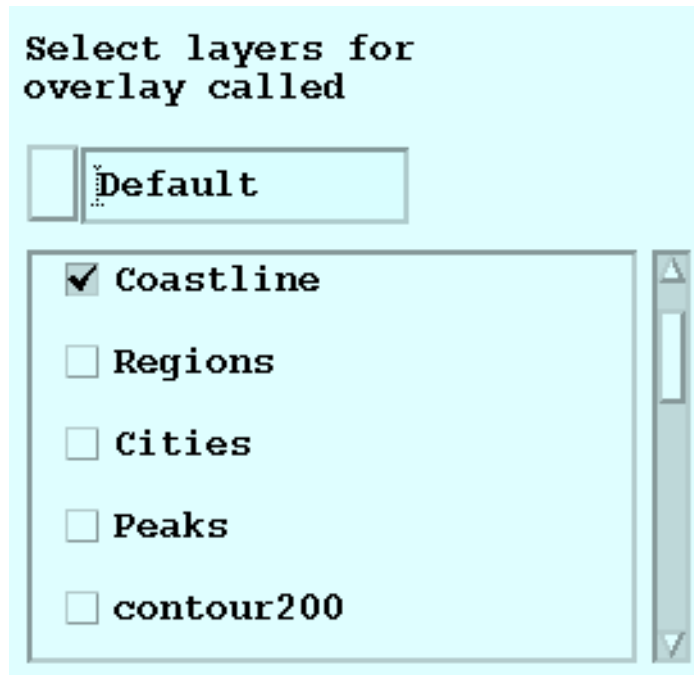
The Shadow button lets you choose the kind of drop shadows displayed with products. A drop shadow shades weather features, making them stand out against the background as if they were clouds shaded by the sun. With this button, you can turn drop shadows off, or choose from three shadow depths.

Tabulations

Tabulations

IRIS overlays can contain abbreviations or numbers for important places, such as airports, city centers, etc. Pressing this button will display a pop-up menu showing the full names for the abbreviations on the screen.

Overlay Layers



Geographic overlays show coastlines, roads, political boundaries etc. See the description of the **overlay** utility in the *IRIS Utilities Manual* for more information.

The **Overlay Layers** button actually stretches the Display Options menu to include the menu shown above. IRIS overlays are usually constructed in multiple layers so that users can turn on/off the layers. After selecting some layers, hit the appropriate apply button at the bottom to see your changes take effect.

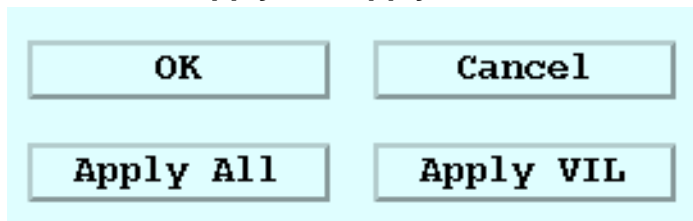
“Virtual Overlays” are simply names given to different combinations of layers. To select a pre-defined virtual overlay, simply click on the button next to the overlay name and select a new name from the list.

Operators can create “virtual overlay names” If you have operator privilege, enter your password via the Quick Look Window main **File** tool. Once you have privilege in the Window:

- Click the button next to the overlay name and select “New”.
- Type in the new name in the prompt pop-up.
- Select the layers that you want.
- Use **File->Save** at the top of the Display Options Menu to save your result.

When you save, the Virtual Overlay Name it is shared among all IRIS windows, printers, etc. This is why it is limited to operators.

OK, Cancel Apply All, Apply CAPPI



After you make some changes to the Display Options, these buttons are used to apply the changes. Any changes that are applied will effect only the window that you are in. You do not have to worry about effecting other windows (and vice versa).

- **OK** applies your changes to the current product type for your window only and exits from the menu.
- **Apply** TOPS (for example) only applies the changes to TOPS.
- **Cancel** exits the menu without making any changes.
- **Apply All** applies the changes to all product types, again for your window only.