

2. Running IRIS Menus

Many IRIS menus can run and connect to the same IRIS host at the same time. The menus provide access to the information that the host gathers. They define tasks, products, and schedules, output the products to tape, another system, or to a display.

The IRIS menus are controlled by a menu bar, which connects and disconnects the user with the host server. It also provides access to the other IRIS menus, such as the Radar Status menu. This chapter describes how to start up and exit from the IRIS menu, and how to use the IRIS menu bar.

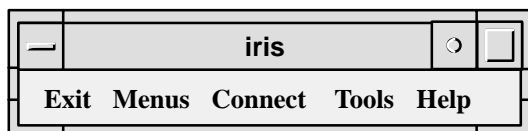
In addition, all the menus share common conventions for navigating the system and for entering information into menu fields. This chapter describes these common conventions.

To start the IRIS menus:

IRIS menus can run from the same or a different system than the host, as long as they are connected to the host over an Ethernet. To start the IRIS menus, log onto the client system as described in Section 1.6.2, then enter the following command from the operating system prompt:

```
$ iris
```

After a short pause, the IRIS menu bar appears:



To exit from the IRIS menus:

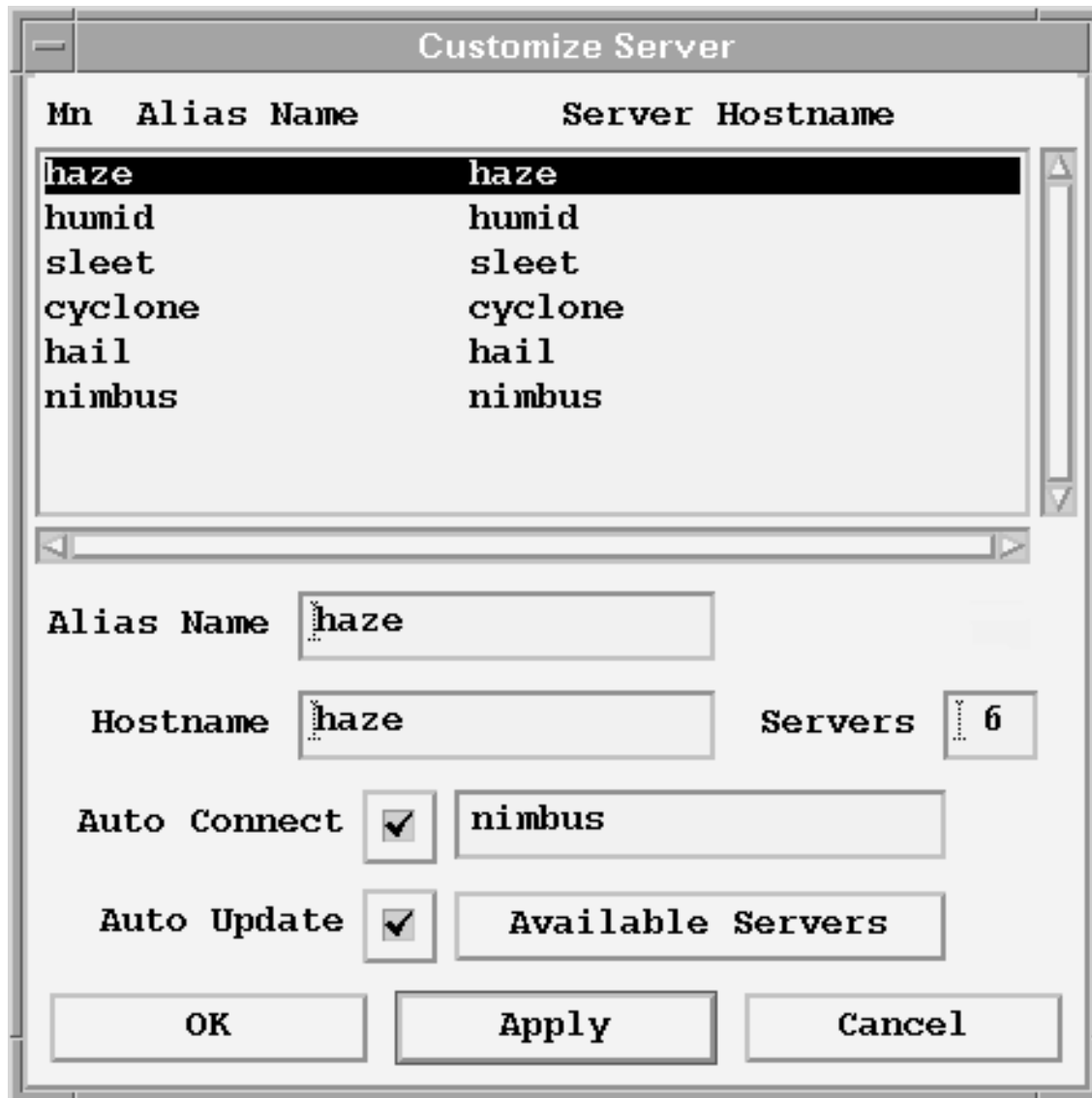
Choose **Exit**→**Exit** from the menu bar.

In this chapter:

| | |
|---|----------------------|
| <i>Customizing the List of Servers</i> | Section 2.1 |
| <i>Connecting and Disconnecting Servers</i> | Section 2.2 |
| <i>Moving Among the IRIS Menus</i> | Section 2.3 |
| <i>IRIS Menu Conventions</i> | Section 2.4 |
| <i>Tools Pull-down</i> | Section 2.5 |
| <i>Using Audio Setup</i> | Section 2.5.1 |
| <i>The IRIS Menu-bar Image</i> | Section 2.5.2 |
| <i>Getting Online Help</i> | Section 2.6 |

2.1 Customizing the List of Servers

The IRIS client menus run locally on your workstation. You can connect these menus to your local IRIS server or IRIS servers on other computers where IRIS is running. When you run the IRIS menus for the first time, you must define the list of IRIS servers that you want to be able to access.



To add a server:

1. Choose **Connect->Customize Server** from the IRIS menu bar. This opens the Server menu shown above.

The top of the server menu contains the list of servers. “Button name” is the default entry which is used for adding new servers. When you run IRIS for the

first time, they are all “Button Name” entries. The bottom of the menu contains the fields which you use to add or change server definitions.

2. Select a list entry. This places the server information into the fields at the bottom of the menu.
3. Enter the server name in the Button Name field and the server’s node name (network node name of a computer where IRIS is installed).
4. Click on the Save button to add the server to the list. The server list is stored on disk so that the entries you make in one session are available in the next.

Click on the Exit button when you are satisfied with your definitions.

For the server that is running on your local workstation, it is customary to name this “local”. The Server name is the node name of your workstation or simply left blank.

You can increase or decrease the number of servers allowed in the list by entering a number in the Servers field. If the number of servers is larger than the number of known servers, unused entries are listed as “Button Name” entries. If the number of servers is smaller than the number of entries in the list, entries are removed, beginning with the last server in the list.

Press the “Auto update” button to configure IRIS to automatically search the network to see if these nodes are running IRIS. An asterisk (*) will be placed next to each node with a running IRIS.

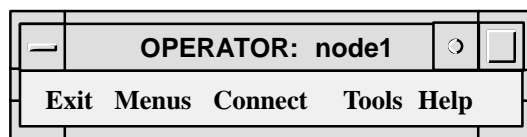
Select a default node, and press “Auto Connect” to configure it to automatically connect to a node if available. This is the preferred way to configure for a single radar system.

2.2 Connecting and Disconnecting Servers

None of the IRIS menus can be activated unless you are connected to a server running an IRIS host. In addition, you can be connected to only one server at a time.

To connect to a server:

Choose **Connect** from the IRIS menu bar and pull down a list of servers that are available. The list should contain the names of the servers that you added in Section 2.1. Choose one from the list. The IRIS menu bar title changes, displaying the class of use (either OPERATOR or OBSERVER) and the name of the server node, as shown below:



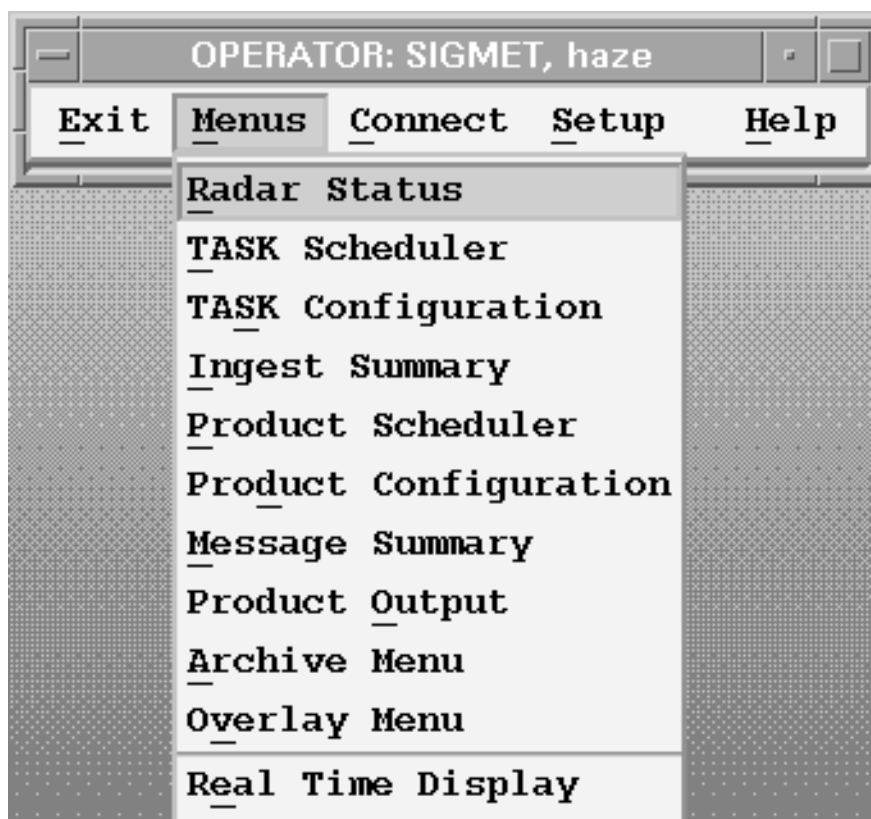
If you are an IRIS observer, you can connect a host and view menus but will not be able to change menus that control the radar or network operation.

To disconnect from a server:

Choose **Connect**→**Disconnect** from the IRIS menu bar.

2.3 Moving Among the IRIS Menus

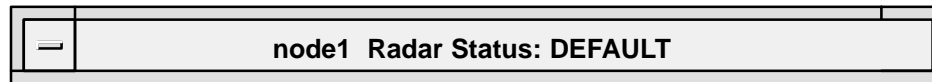
You can access the IRIS menus from the IRIS menu bar. Simply choose **Menus** and the name of the menu you want to access. You can also access the same list of menus from each menu. In that case it will dismiss the current menu, in effect switching menus. The Real-Time-Display button actually launches a separate stand-alone rtdisp application.



2.4 IRIS Menu Conventions

All IRIS menus share certain characteristics and conventions.

2.4.1 Menu Title

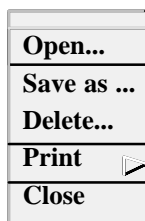


The title of every IRIS menu contains the name of the server to which IRIS is connected, the name of the menu, and the name of any configuration file that has been loaded into the menu. Often, if you have not explicitly loaded any configuration files, the configuration file named DEFAULT is loaded for you.

2.4.2 Common IRIS Menu Commands

Pull-down menus provides access to common operations. The following commands are available from most IRIS menus.

File



Open pops up a list of configuration files. Choose the one you want to load into the menu. In menus where the data is “live,” this choice is called **Load**. (In “live” menus, such as the Overlay menu, you see the results of your menu choices immediately.)

Save lets you save your configuration under the same name or under a new name that you specify.

Delete erases the configuration file that is currently loaded into the menu.

Print creates an X-window dump of the menu you are running, as follows:

- **Print→to Printer** sends the output to the Postscript or color printer specified in the Printer Setup menu.
- **Print→to File** sends the output to a file in your default home directory. The file name consists of a three-letter abbreviation of the menu name, the current date and time, and the **.xwd** file extension.
- **Print→Setup** lets you configure the printer on your system. See Appendix C of the *Software Installation Manual* for details.

Close exits from the menu and returns you to the IRIS menu bar.

Menus

| |
|------------------------------|
| Radar Status |
| TASK Scheduler |
| TASK Configuration |
| Ingest Summary |
| Product Scheduler |
| Product Configuration |
| Message Summary |
| Product Output |
| Archive Menu |
| Overlay Menu |

You can access any IRIS menu from any other IRIS menu. Simply pull down the **Menus** menu and choose the one you want to access.

Commands

| |
|-------------------|
| Update Now |
| Reset Size |

When many IRIS menus are running at the same time on a network, information can get out of sync. **Update Now** brings all information up to date.

If you should change the size of a menu, you can use the **Reset Size** command to reset the menu back to its default size.

Help

| |
|--------------------|
| On Menu... |
| Contents... |
| Index... |

On Menu opens the online documentation at the first page of the chapter describing the menu.

Contents opens up the online documentation at the Table of Contents. You can access any section of the book directly from the Index.

Index opens up the online documentation at the first page of the Index. You can access information anywhere in the book directly from the Index.

See Section 2.6 for information on viewing the documentation online.

2.4.3 Entering Information in Menus

The IRIS menus require a minimum amount of typing. Most operations can be performed by making selections from lists or by clicking a mouse button. There are a few basic types of field in all the IRIS menus:

Text Fields

Text fields contain textual information, such as the name of a configuration file or numeric value. You can simply enter the text directly into the field or click on the button next to the field and pop up a list of valid values.

Lists of Objects

Some menus display a list of objects. The Product Scheduler, for example, contains a list of products that have been configured on the system. You can select products from the list and schedule when they should run.

When a menu contains a list, you can often position the mouse cursor over a particular entry or over a particular field and pop up a menu of commands. Click the right mouse button to pop up menus of valid commands for list entries.

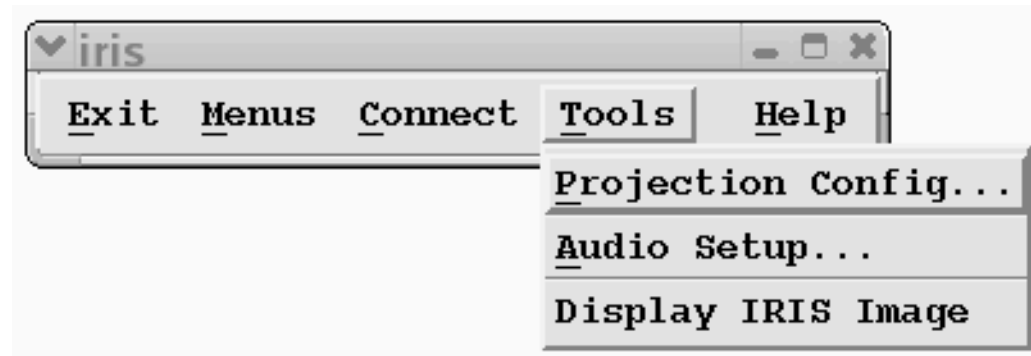
You can select a group of entries, so that you can perform the same operation on all of them. There are a number of ways to select one or more entries from a list:

- Click the left mouse button over a single entry, and it is selected. Any previously selected entry is deselected.
- Click and drag the mouse over a group of entries, and they are all selected. Any entries that were previously selected are deselected.
- Press the Ctrl key and click the left mouse button to select a single entry without deselecting any previous entries. Using this method, you can select a group of entries that are not next to each other in the list.
- Press the Ctrl key, then click and drag the mouse. This selects a group of entries without deselecting any previous selections. This method lets you select multiple blocks of entries.

Toggle Buttons

Toggle buttons have two possible states — on or off. Click the left mouse button once to toggle these buttons “on” (the button appears to be pushed in), once more to toggle the button “off” again.

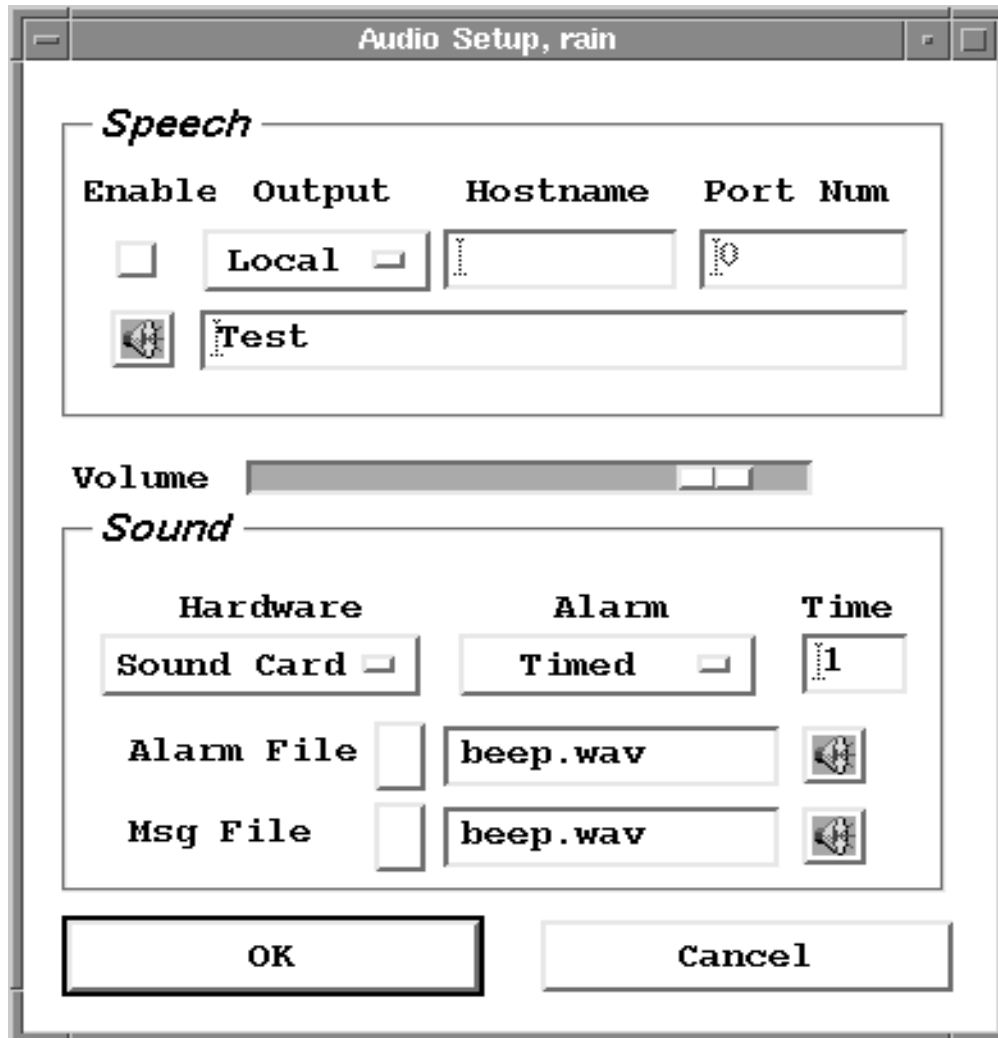
2.5 The Tools Pull-Down



The tools pull-down gives you access to two separate configuration tools: The Projection Configuration menu, and the Audio Setup menu, as well as allowing you to toggle the IRIS Image on or off. For details on the projection configuration menu, please see section 2.1.2 of the *IRIS Product and Display Manual*. The other features are discussed below.

2.5.1 Using the Audio Setup

The Menu is located under Tools in the IRIS Main Menu bar. Select -> Tools/Audio Setup . . . and the following menu appears.



Enable

The upper "Speech" panel controls the IRIS Speech options.

This button enables or disables all speech originating from your local workstation.

Output

The selection option here is either Remote or Local. "Local" means output on the sound card in your workstation. "Remote" means output to the specified PC using the specified port number. The speech quality of PC output is higher. This option requires the IRIS speech product for the PC.

Hostname

For remote output, enter the host name of the workstation.

Port Num

For remote output, enter the port number here, the recommended value is 30731.

Test

Pressing this button causes IRIS to send the test string on the menu as a spoken output.

Volume

This slide bar is common to all audio options, both speech and other sounds.

Sound: the lower panel controls other sounds than speech

Hardware

If you have sound card, select it, otherwise select Bell.

Alarm

Select Continuous or Timed alarm.

Time

For timed alarm, select time (in seconds) for how long beep, honk or other sound you want to hear.

Alarm File

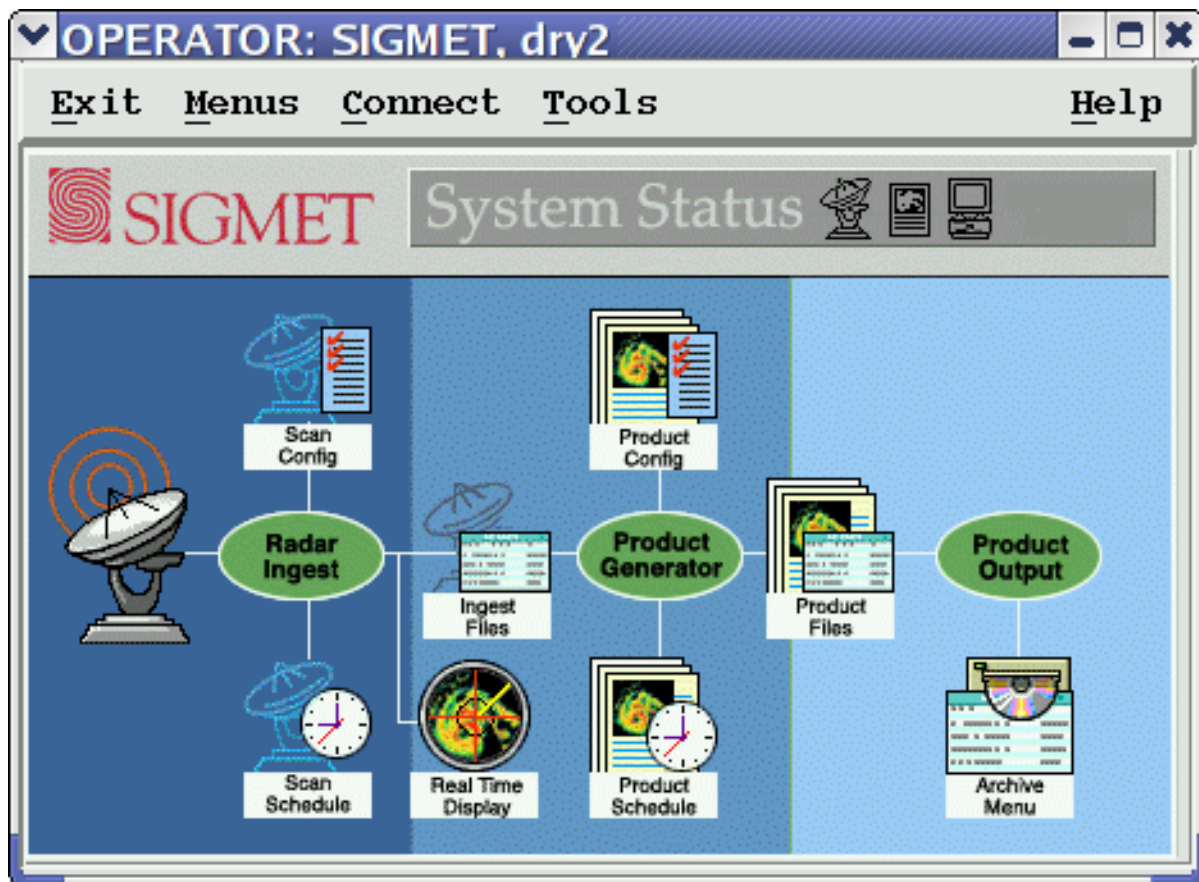
Select the .wav file you want to hear when IRIS gives an alarm message. The loudspeaker icon gives you a sample. Note that options are available only if you have a sound card.

Msg File

Select the .wav file you want to hear when IRIS gives a non-alarm message. The loudspeaker icon gives you a sample.

2.5.2 The IRIS Menu-bar Image

This graphical interface display is toggled on/off in the IRIS Main Menu bar. Select → Tools/Display IRIS Image. Here is how the image looks:

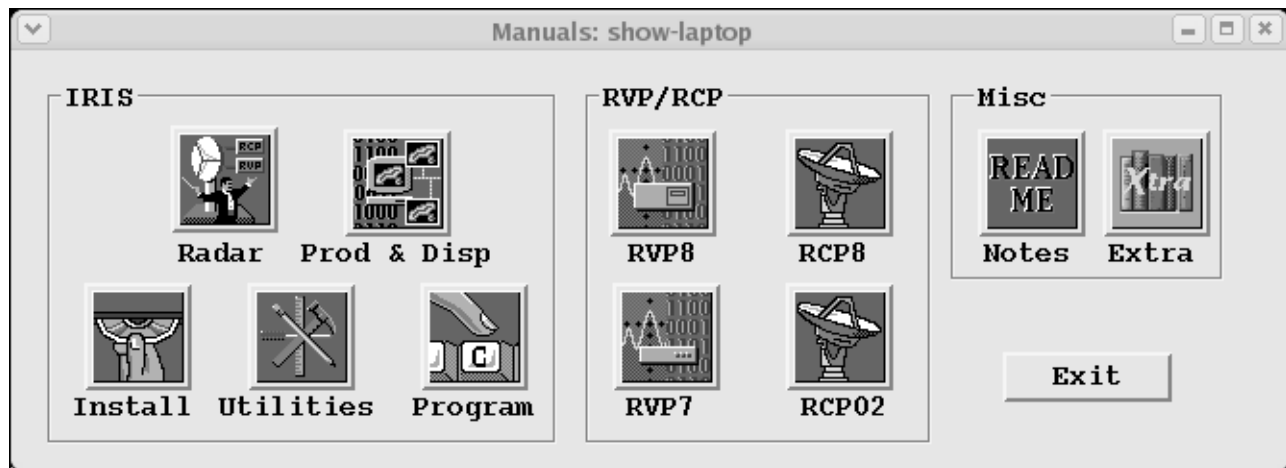


This image allows the user to select the various IRIS menus by clicking the cursor on the various graphical icons in the display.

2.6 Help and the Manuals Menu

SIGMET documentation can be read online using **acroread**[™], an online documentation viewer produced by Adobe[™]. Acroread ships with IRIS and is installed at the time IRIS is installed. You can access the documentation at any time while running the menus as follows:

- By clicking on Help in any IRIS Menu. This will take you to the appropriate manual and chapter for the menu that you are in.
- By using the Manuals Menu shown below.



The Manuals Menu is can be started from a terminal by typing:

```
$ manuals &
```

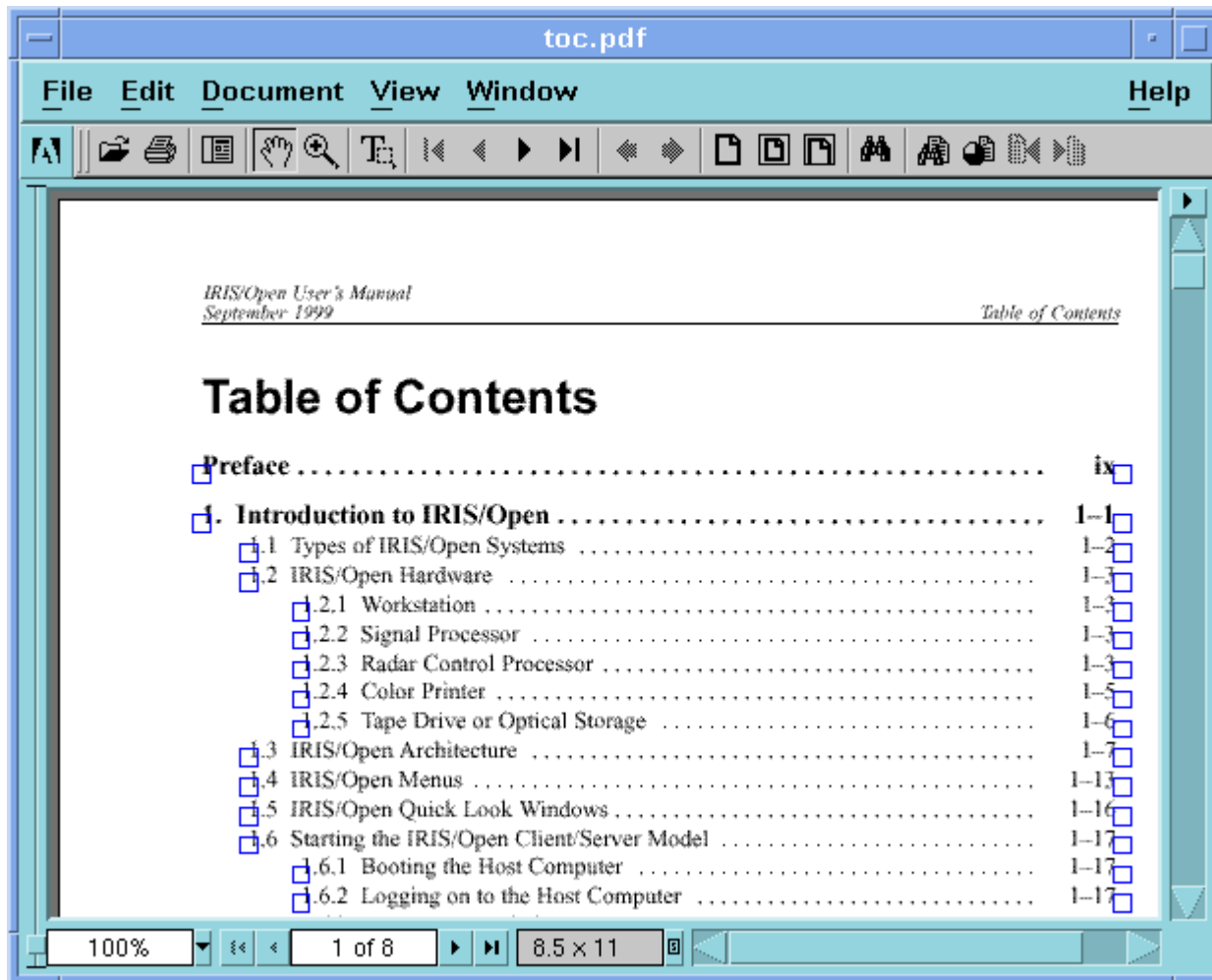
The Manuals Menu can also be started by double clicking the Manuals icon in the IRISNet utility.

When you launch a manual from the Manuals Menu, you are taken to the Table of Contents. Select the chapter and section that you want and then click on the hot link symbol to navigate to that section.

Manuals have internal hot links to assist you with cross-referencing other sections of the same manuals. The hot links do not connect different manuals. Switching among manuals is done via the Manuals Menu.

2.6.1 Moving Around in the Document

When you launch a manual, the reader will start and then the reader window will appear as shown below.



The reader comes equipped with its own on-line help (upper right) to assist you with the various features such as:

- The Page Up and Page Down keys scroll forward and backward through the book, one page at a time.
- The arrows at the top will take you previous next page, beginning and end of document and previous and next screen.
- Zoom and pan (with scroll bars).

Embedded within the text are hypertext links, which display as small blue icons. When you click on a hypertext link, it takes you to some other location within the book. Hypertext links let you go immediately to a section of the book from the Table of Contents or Index, or from another chapter.

2.6.2 Searching for Information

Edit/Find allows you to search for specific text. This is useful when you do not know what section of a chapter contains the information that you want.

2.6.3 Printing Online Documentation

Online documentation can be printed using File/Print if a postscript printer has been configured, as described in the *Software Installation Manual*.

To print a document:

1. Display the chapter that you want to print, then choose **File->Print** from the menu bar.
2. The reader pops up a printer dialog window. Choose the range of pages that you want to print and the print options.

2.6.4 Accessing Other SIGMET Online Books

You can access any of SIGMET's online books via the Manuals Menu as described in the beginning of Section 2.6

2.6.5 Getting Additional Help on Adobe Acrobat Reader

Online help for the reader is available through the Help pull-down menu in the reader window.