

2013-03-04

## Objective:

This document provides instructions how to install and configure Vaisala legacy IRIS/Web Server software on Red Hat Enterprise Linux system. It must be installed on the same system where the IRIS server is installed. These installation procedures apply to the fresh installation system.

### 1.0 RHEL6

The first step is to install Red hat Linux. You can use either Vaisala's Kickstart or manually to install RHEL6. If you are installing manually, please follow the instructions from the IRIS installation manual.

After you have done Red hat Linux installation, and get the system running, log in as "root" user. Insert IRIS & RDA DVD disc into DVD drive. The system should mount the drive automatically; for example, /media/irisrda\_8.13.2. If not you can mount DVD yourself as below:

```
# mount /dev/cdrom /mnt
```

#### 1.1 Extract RPMS

```
#cd /  
#tar zxvf /<your path>/RHEL6/extras/iris_webview/iris_web_rhel6_rpms.tgz  
#cd /iris_web_rpms
```

#### 1.2 install java 1.6

```
#rpm -Uvh java-1.6.0-sun-1.6* java-1.6.0-sun-plugin-1.6* flash-plugin-*
```

#### 1.3 Install apache commons packages

```
# rpm -Uhv apache-commons*.rpm
```

Add softlink to commons-pool from tomcat6 tree

```
# cd /usr/share/tomcat6/lib/  
# ln -s /usr/share/java/commons-pool.jar ./
```

#### 1.4 Install IRIS Web

```
# cd /  
# tar xzf /<your path>/iris_web/iris_web.tgz
```

2013-03-04

Create if not exists and add line

```
ProxyPass /irisservlets/ ajp://localhost:8009/irisservlets/
```

to

```
/etc/httpd/conf.d/proxy_ajp.conf
```

Proceed to section 3.0 to finish installation

## 2.0 RHEL5.4

The first step is to install Red hat Linux. You can use either Vaisala's Kickstart or manually to install RHEL5.4. If you are installing manually, please follow the instructions from the IRIS installation manual.

After you have done Red hat Linux installation, and get the system running, log in as "root" user. Insert IRIS & RDA DVD disc into DVD drive. The system should mount the drive automatically; for example, /media/irisrda\_8.13.2. If not you can mount DVD yourself as below:

```
# mount /dev/cdrom /mnt
```

### 2.1 Extract RPMS

```
#cd /  
#tar zxvf /<your path>/RHEL6/extras/iris_webview/iris_web_rhel5_rpms.tgz  
#cd /iris_web_rpms
```

### 2.2 install java 1.6

```
#rpm -Uvh java-1.6.0-sun-1.6* java-1.6.0-sun-plugin-1.6* flash-plugin-*
```

### 2.3 Install jpackage utilities

```
# rpm -Uvh jpackage-utils-5.0.0-2.jpp5.noarch.rpm
```

if you are getting "/usr/bin/rebuild-security-providers is needed by .."  
error, then

```
# rpm -Uvh --nodeps jpackage-utils-5.0.0-2.jpp5.noarch.rpm
```

### 2.4 Install the rest of the packages

```
# rm jpackage-utils-5.0.0-2.jpp5.noarch.rpm  
# rm java-1.6.0-sun-1.6* java-1.6.0-sun-plugin-1.6* flash-plugin-*
```

2013-03-04

```
# rpm -Uhv *.rpm
```

Add softlink to commons-pool from tomcat6 tree

```
# cd /usr/share/tomcat6/lib/  
# ln -s /usr/share/java/commons-pool.jar ./
```

## **2.5 Install IRIS Web**

```
# cd /  
# tar xzf /<your path>/iris_web/iris_web.tgz
```

Create if not exist, and add line

```
ProxyPass /irisservlets/ ajp://localhost:8009/irisservlets/
```

to

```
/etc/httpd/conf.d/proxy_ajp.conf
```

## **3.0 Configure service (RHEL5.4,RHEL6)**

Usually the RPM installation will take care of the service auto start. If not you can make Apache Web Server and Tomcat 6 Server start automatically everytime system boot up do the following:

```
#/sbin/chkconfig --level 345 httpd on  
#/sbin/chkconfig --level 345 tomcat6 on  
#/sbin/service httpd start  
#/sbin/service tomcat6 start
```

## **4.0 Testing IRIS/Web Server**

To test the IRIS/Web Server that you just installed. From your system open the Firefox web browser, and enter your web server address in the URL address box. For example <http://localhost>, and you should see the page Welcome to IRIS/Web. Click on the IRIS/Web link on the page and it should take you to the Quick Look Window page without authentication.

## **5.0 Configure Login Authentication**

### **5.1 RHEL6 and RHEL5.4**

To protect unauthorized users from accessing IRIS /Web Server, you can configure Apache basic authentication following these steps:

2013-03-04

1. Create password file that contains users that allow to access. This password file must store somewhere in your system that no one from outside can access. However, the file and its directory must allow apache user to read. For example, you can create password file called “.htpasswd” in directory /etc/htpasswd, and assign ownership to apache.apache:

```
#mkdir /etc/htpasswd  
#chown apache.apache /etc/htpasswd
```

2. Create user; for example, to create radarop user

```
#!/usr/bin/htpasswd -c /etc/htpasswd/.htpasswd radarop.
```

Enter password when prompted.

3. Add more users

```
#!/usr/bin/htpasswd /etc/htpasswd/.htpasswd testuser.
```

Notice this time there is no -c.

4. Edit /etc/httpd/conf.d/proxy\_ajp.conf, and add lines at the end:

```
<location> “/weblook/irisapplets”>  
    AuthType Basic  
    AuthName “IRIS Web View”  
    AuthUserFile /etc/htpasswd/.htpasswd  
    Require valid-user  
</location>
```

5. Restart your web server. /sbin/service httpd restart

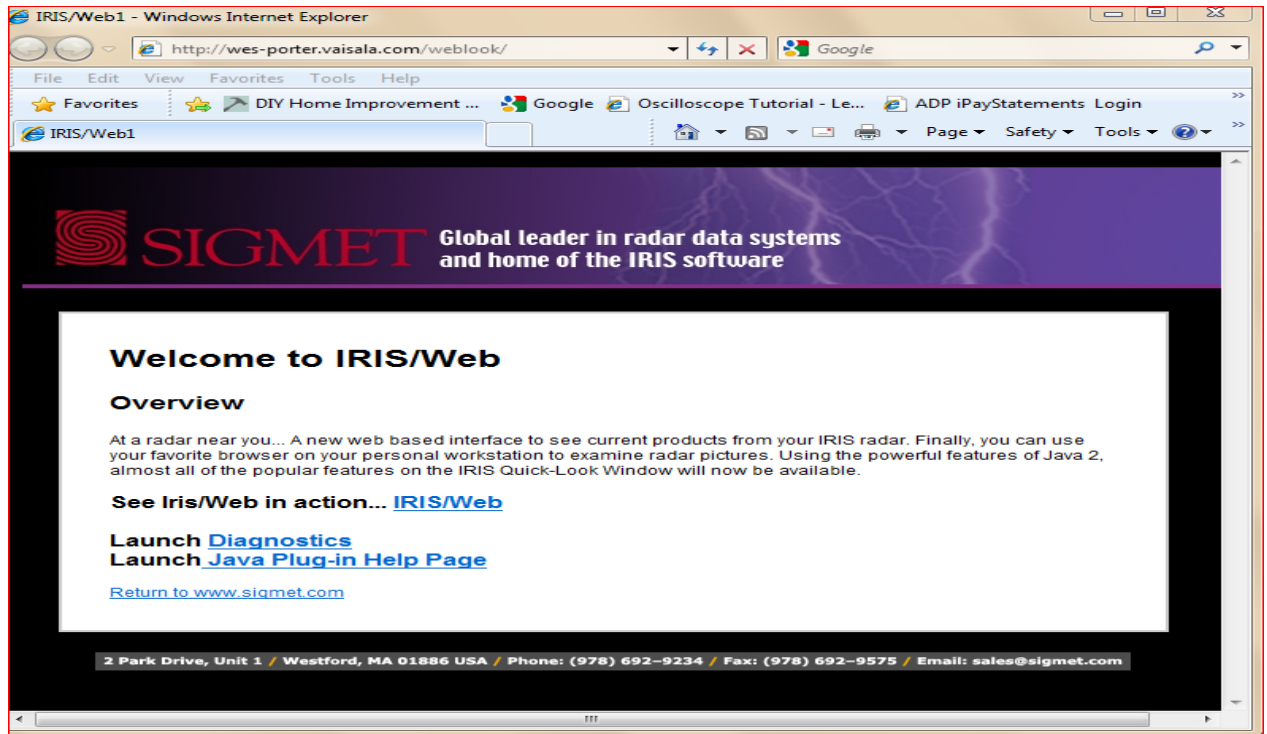
## 5.2 Testing Authentication

From your desktop PC or any systems from your network:

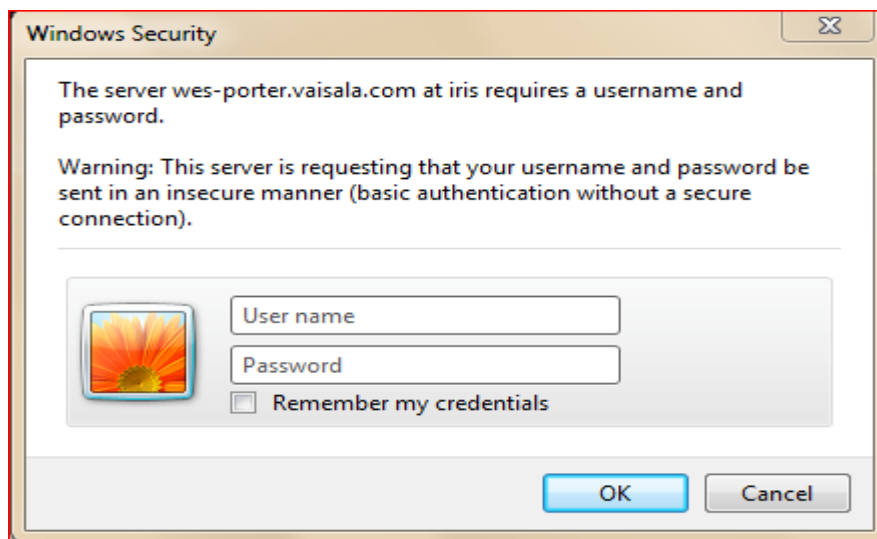
1. Start your favorite web browser
2. Enter your server name from the ULR address; for example, wes-porter.vaisala.com, and it will bring you to the page

## IRIS/WEB SERVER INSTALLATION INSTRUCTIONS

2013-03-04



3. Click on the IRIS/Web link, you will get the login window. Enter username and password that you created in section 5.1



4. After successful authenticate, it will open the page with the Quick Look window. From here you can use QLW as normal IRIS QLW with limited features.

## IRIS/WEB SERVER INSTALLATION INSTRUCTIONS

2013-03-04

